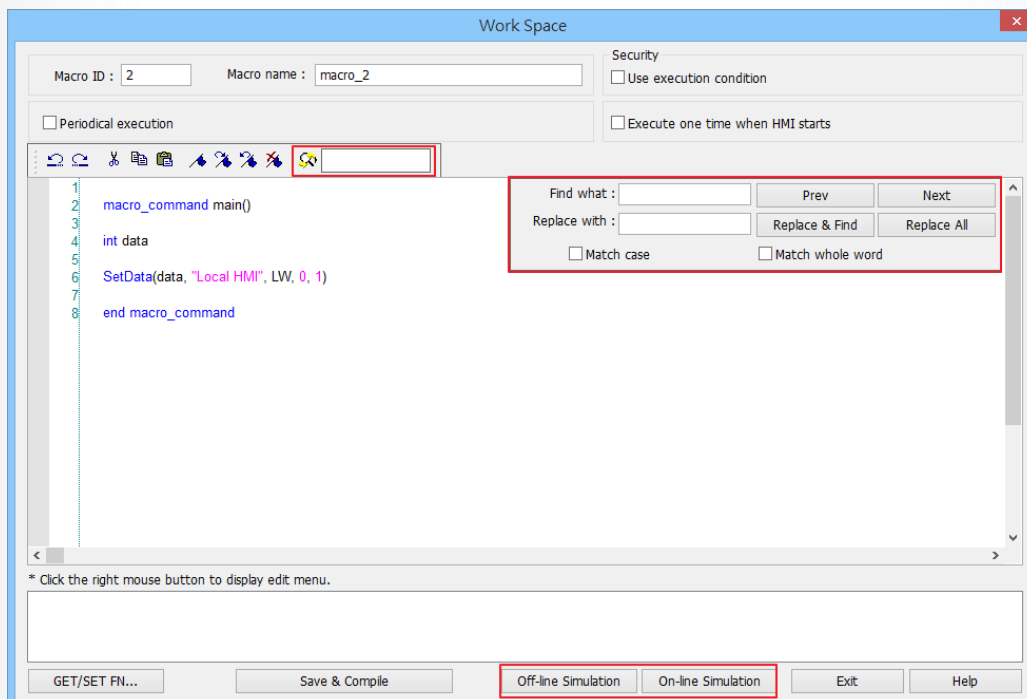


Software Version : EasyBuilder Pro V5.02.01

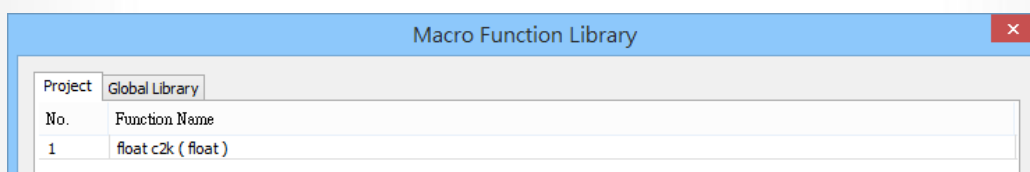
## New Features

### EasyBuilder Pro

1. Added the following new features in macro editor:
  - a. Removed the monopoly attribute of macro editor. This allows returning to the main screen and editing the project with the Work Space window open.
  - b. Added Off-line Simulation and On-line Simulation features in the Work Space window.
  - c. Added Find and Replace features in Work Space window.



- d. Added project embed option for Macro Function Library. Please note that decompiling the project will only produce the macro commands that are used.



- Added Y-Scale feature in Trend Display object.



- Added the following system registers:

LB-12042	open/close [System information] dialog (set ON/set OFF)
LB-12056	the user touches an unauthorized object (when ON)
LW-9491	error code for CAN-Bus PLC
LW-10814	connecting to a Weintek HMI (0:none, 1:connecting)
LW-10815	link speed of ethernet 1 (0:failure, 10 (10M), 100 (100M), 1000 (1G))
LW-10816	link speed of ethernet 2 (0:failure, 10 (10M), 100 (100M), 1000 (1G))

LB-12042: Setting this register opens / closes OS system information window. The system information can be viewed even when the toolbar is hidden.

LB-12056: Attempting to perform an unauthorized operation sets this system register ON.

- Added more specific explanation of PLC communication error codes as listed below. When communication fails, the system registers: LW-9400~9449, 9490, 9491 will display the error code that clearly explains the cause. Error codes 24 and 25 are new additions.

Error Code	Cause of Communication Error
1	The device is busy and not yet ready to process a command.
2	Communication error due to unexpected reason.
3	The device does not exist.
4	The device using the specified station number does not exist.
5	Incorrect address format.
6	Read/Write unsupported address.
7	The driver of the device does not exist.

8	The COM port does not exist.
9	Incorrect IP address or unable to connect the device.
10	Checksum error.
11	Unidentified command.
20	The USB device is improperly connected.
21	The CAN Bus device is improperly connected.
22	No reply from the device.
23	Insufficient data read from the device during timeout.
24	The Conversion Tag used by the object does not exist or the content is incorrect.
25	HMI is not accepting any commands from a remote HMI.
251	Read/Write exceeding number of words from/to the register of the MODBUS device.
252	The MODBUS device replies incorrect data format.
253	MODBUS device checksum error.

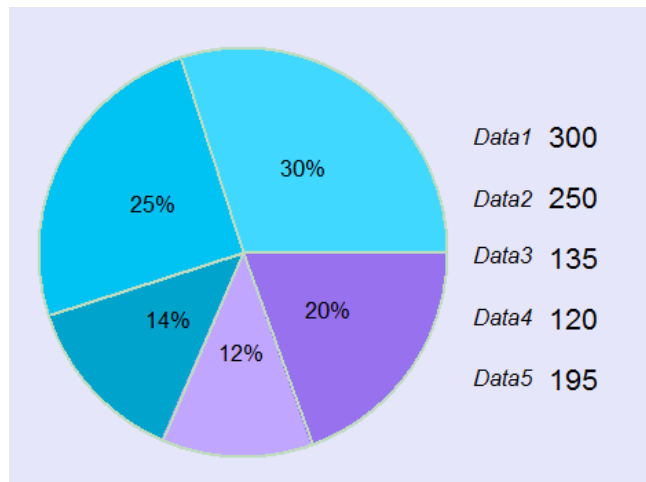
5. Added [Password free] check box in System Parameter Setting. The client can connect with HMI without entering a password.



6. Added macro function BCC(). This function calculates BBC (Block Check Character) to facilitate error detection.
7. Added [Center in Window] editing tools for centering objects horizontally / vertically in window.



8. Added Pie Chart object. This object is divided into slices to illustrate numerical proportion.



9. Added [Follow] check box in the Notification group box in Event Log settings. The notification address will reset to the original state once the alarm condition returns to normal.

Notification

☒ Enable    ☒ Set ON    ☐ Set OFF

☒ Follow

PLC name : Local HMI    Settings...

Address : LB    12

10. Added QR Code object. This object codes texts into QR codes and displays them.
11. Added [High priority] check box in Data Sampling settings dialog box. Data sampling processes with this feature enabled will be prioritized. Please note that too many priorities can slow down update rate of other objects.

Sampling mode

☒ High priority (this may reduce refresh rate of screen components.)

☒ Time-based    ☐ Trigger-based

Sampling time interval : 0.5 second(s)

12. The milliseconds field can be omitted in the backed-up CSV file of Data Sampling.
13. Added EasyAccess 2.0 server location in System Parameter Settings. Current location includes Global and China.
14. Network time server of Time sync supports Domain Name (e.g. 0.pool.ntp.org) in System Parameter Settings.

15. Added [Bit combination] mode in [Word Lamp]. Lamp state depends on the states of bit combinations, where PLC 1 represents the least significant bit (LSB), PLC 2 represents the next LSB, and so on. Maximum number of bit is 4, for a total of 16 states.

The screenshot shows the 'Word Lamp' configuration window. At the top, there are two radio buttons: 'Word Lamp' (selected) and 'Multi-State Switch'. Below them is a 'Mode' dropdown menu set to 'Bit combination'. The 'Read address' section contains four rows, each for a PLC (PLC 1 to PLC 4). Each row has a 'PLC' dropdown (all set to 'Local HMI'), an 'Address' dropdown (all set to 'LB'), and a numeric input field (values 0, 1, 2, 3 respectively). Each row also has a 'Settings...' button. The 'Attribute' section at the bottom has a 'No. of states' dropdown set to '16'.

## Corrections

### EasyBuilder Pro

1. Fixed the problem where the mouse cursor is hidden when [With each operation from a button, a sound is emitted.] is selected.
2. Fixed the problem where hot swapping USB drive may cause error in writing data to EM address.
3. Fixed the problem where Address Tags imported cannot apply correctly to remote PLC addresses.

4. Fixed the problem where Pass-through with MT8090XE and Mitsubishi FX3U PLC is not possible.
5. Fixed the problem that causes recipe import /export to interpret csv files with multi-lined text or those modified in Excel incorrectly.
6. Fixed the problem where the wait\_time parameter of macro function INPORT2() is not effective.
7. Fixed the problem where the project files using Tag PLC cannot be correctly decompiled.
8. Fixed the problem where if Indirect Windows object uses window offset, it will not show the window when the initial read value is zero.

### cMT Viewer

1. cMT Viewer for Windows and cMT-iV5 are updated to version 1.5.4.
2. Fixed the problem where if Adjust cMT Viewer to windows size is not used and there is window scroll bar for cMT Viewer, users cannot enter information in Numeric Input and ASCII Input objects.
3. Fixed the problem where opening projects on older OS of cMT-SVR will fail.
4. Fixed the problem where unknown error will occur if cMT-iV5 is disconnected from cMT-SVR.

## Drivers

1. Added **Mitsubishi FX5U (Ethernet)** driver.
2. **Moeller XC-CPU101** driver added MX device type.
3. **BACnet BACnet/IP** driver added Export Tag function to export tag information. Exported tags can be imported to another project.
4. **Rockwell Free Tag Names** drivers added error check dialog. If there is an error during tag importing, it will show invalid tags and can export the error information.

5. Fixed the problem where data cannot be completely transferred from Recipe Database to *Beckhoff TwinCAT PLC (Ethernet) – Free Tag Names* device type.